

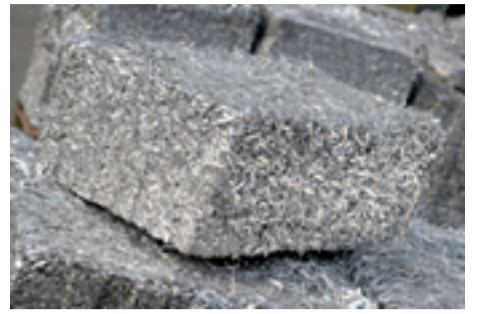


034 METAL INDUSTRY

Aluminium scrap

1. Al rope
2. Al profiles, coated and clean, with or without thermal brakes
3. Al mixed scrap (soft and hard)
4. Al turnings
5. Al cans
6. Al offset plates
7. Al dross

Note: iron, other metals (Pb,Cu,Zn,...) and non metal inclusions not allowed.



Cooper

1. Millbery / Candy
2. Copper rods and bars more than 3 mm thick
3. Copper tubes, sheets and strips more than 2 mm thick
4. Copper tubes, sheets and strips more than 0.5 mm thick
5. Copper tubes, sheets and strips more than 1 mm thick
6. Uncoated pore made of copper wire
7. White copper scrap
8. Burned copper rope, wire, enameled wire, cooper items
9. Cooper turnings
10. Copper granulate
11. Cooper dross

Note: other metals and non metal inclusions not allowed.



Brass

1. Industrial brass
2. Mixed brass
3. Coolers
4. Ms turnings
5. Ms dross



Bronze

1. Tinned bronze
2. Aluminium bronze
3. Bronze turnings
4. Bronze dross



Zink

1. Mixed zinc scraps
2. Hard zinc
3. ZAMAK

Lead

1. Lead sheets
2. Soft lead (cable lead)



Other

1. Telephone relay scrap
2. Tin scrap
3. Chrome nickel non magnetic
4. Batteries
5. Coated cables